

# CAMPAGNOLA

Musica di  
M. Porro

Polca

Strumenti in Do

Musical score for Campagnola Polca, Strumenti in Do. The score is written in treble clef, 2/4 time, and key of D major. It consists of nine staves of music. The first staff begins with a treble clef, a key signature of one sharp (F#), and a 2/4 time signature. The melody is written in eighth and sixteenth notes. Below the first staff, there are four chord symbols: Re7, Re7, Re7, and Sol. The second staff has one chord symbol: Re7. The third staff has two chord symbols: Sol and Mi7. The fourth staff has four chord symbols: La m, Sol, Re7, and Sol. The fifth staff has four chord symbols: La m, Sol, Re7, and Sol. The sixth staff has two chord symbols: Re7 and Sol. The seventh staff has two chord symbols: Re7 and Sol. The eighth staff has two chord symbols: Re7 and Sol. The ninth staff has two chord symbols: Re7 and Sol. The score ends with a double bar line and repeat dots.

*Prima Parte  
poi segue*

*ENTRATA*



Sol 7

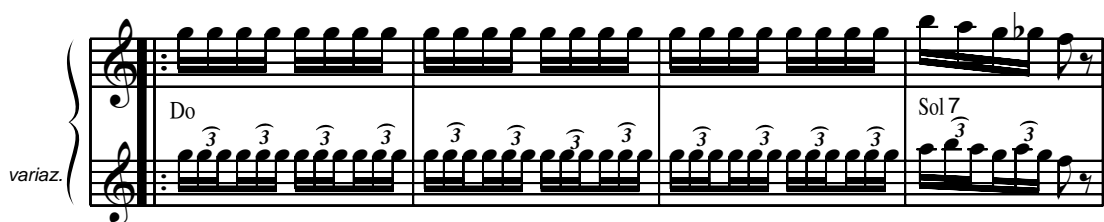
Fa

Sol 7



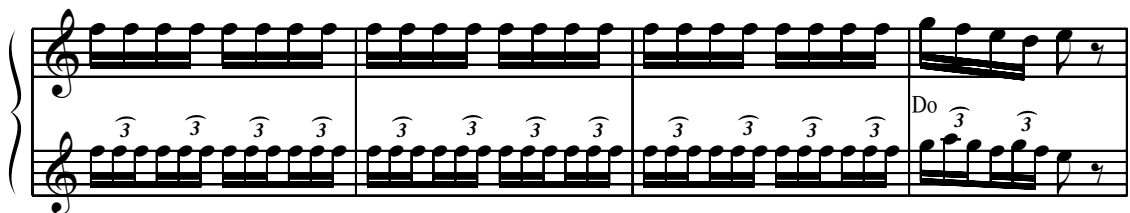
Do

**TRIO**

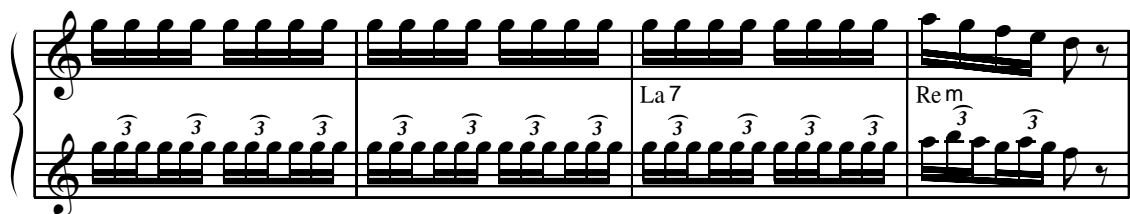


Do

Sol 7

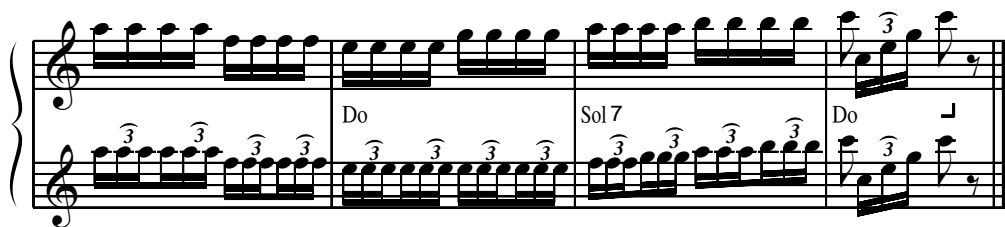


Do



La 7

Re m



Do

Sol 7

Do

*Prima Parte  
poi Entrata e  
Trio 2 volte*